



5 Elmgrove Avenue, Easton, Bristol, BS5 0HS

£425,000

A charming refurbished 1300 Sq ft three story terrace home in the heart of Vibrant Easton. No Onward Chain.

- Recently refurbished to high standard
- 4 Bedrooms
- Master bedroom with ensuite shower room
- Family bathroom and second shower room
- Two reception rooms
- Separate utility room

#### The Property

Number 5, Elmgrove Avenue is a handsome Victorian terraced property conveniently situated within a short walk to the city centre and neighbouring countryside.

This elegant four-bedroom period house has recently been extensively and sympathetically refurbished blending original features with modern touches to create beautiful, light and airy accommodation set over three levels. A traditional entrance hall opens onto an internal stained-glass door and corridor leading to the downstairs accommodation. The living room offers a relaxed space with a beautiful period cast iron fireplace, cornice coving, ceiling rose and double window with fitted wooden shutters to the front elevation.

The adjacent dining room benefits from a period fireplace and large fitted wooden dresser. The shaker style kitchen offers plenty of storage with floor and base cupboards and comes with fitted fridge/ freezer, dishwasher, gas hob and electric oven and extractor fan. It leads on to a convenient separate utility room with a door opening onto the courtyard and fully tiled modern bathroom fitted with an elegant freestanding sleeper bath.

The first floor comprises a fully tiled shower room with WC and 3 bedrooms, with the generous Bedroom 2 at the front of the property occupying the full width of the house.

Finally, positioned on the top floor, the impressive master bedroom complete with a stylish ensuite shower room which has been thoughtfully incorporated into the loft space, comprising mains fed shower, W.C, wash basin and tiled flooring. The master bedroom also offers eaves storage space. To the outside is a paved private courtyard garden.

#### The Location

The property is located in a quiet residential cul de sac a few minutes walk from both Stapleton Road, Easton Road and Old Market in the cultural suburb of Easton and offers a wide variety of independent local traders and convenience stores. Bristol City Centre is approximately two miles away whilst the nearby M32 motorway network offers a fast route out of the City. The property is also within walking distance of Owen Square Park.

#### Other Information

Freehold.

Management Fee:

Council Tax Band: A

#### Please Note

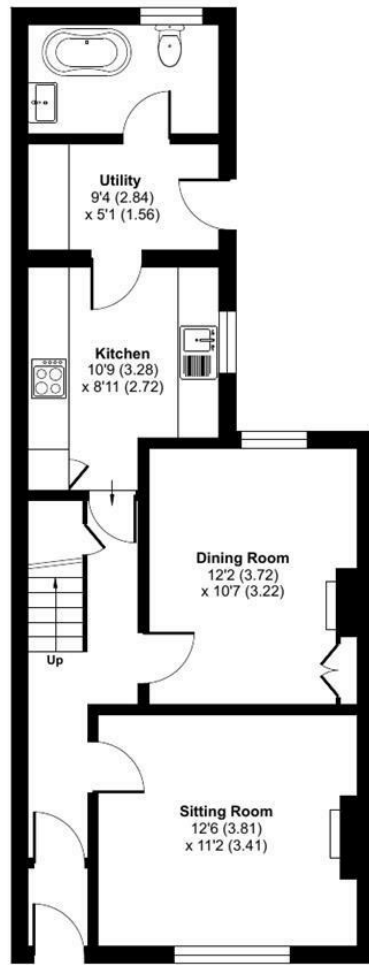
Hollis Morgan endeavour to make our sales details clear, accurate and reliable in line with the Consumer Protection from Unfair Trading Regulations 2008 but they should not be relied on as statements or representations of fact and they do not constitute any part of an offer or contract. All Hollis Morgan references to planning, tenants, boundaries, potential development, tenure etc is to be superseded by the information provided in your solicitors enquiries. It should not be assumed that this property has all the necessary Planning, Building Regulation or other consents. Any services, appliances and heating system(s) listed may not been checked or tested and you should rely on your own investigations. The seller does not make any representation or give any warranty in relation to the property and we have no authority to do so on behalf of the seller. Please note that in some instances the photographs may have been taken using a wide angle lens.



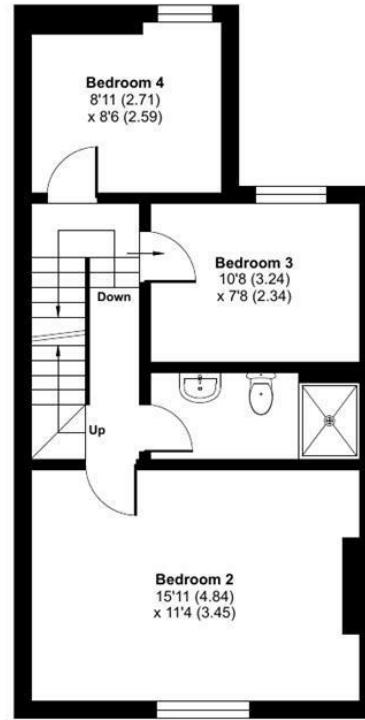
# Elmgrove Avenue, Easton, Bristol, BS5

Approximate Area = 1297 sq ft / 120.4 sq m

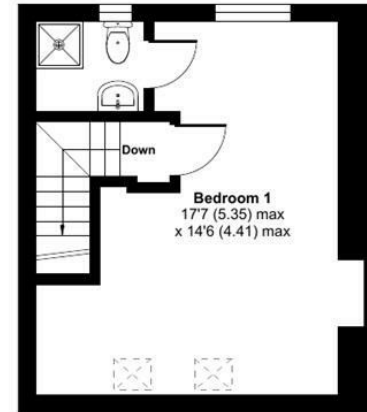
For identification only - Not to scale



GROUND FLOOR



FIRST FLOOR



SECOND FLOOR



Floor plan produced in accordance with RICS Property Measurement 2nd Edition, Incorporating International Property Measurement Standards (IPMS2 Residential). © ntheconom 2024. Produced for Hollis Morgan. REF:1215050



TEL | 0117 933 9522 | 9 Waterloo Street, Clifton, Bristol BS8 4BT

[www.hollismorgan.co.uk](http://www.hollismorgan.co.uk) | [post@hollismorgan.co.uk](mailto:post@hollismorgan.co.uk)

Hollis Morgan Property Limited, registered in England, registered no 7275716  
Registered address, 5 Upper Belgrave Road, Clifton, Bristol BS8 2XQ

Energy Efficiency Rating		Environmental Impact (CO <sub>2</sub> ) Rating	
Current	Potential	Current	Potential
Very energy efficient - lower running costs		Very environmentally friendly - lower CO <sub>2</sub> emissions	
(92 plus) <b>A</b>		(92 plus) <b>A</b>	
(81-91) <b>B</b>		(81-91) <b>B</b>	
(69-80) <b>C</b>		(69-80) <b>C</b>	
(55-68) <b>D</b>		(55-68) <b>D</b>	
(39-54) <b>E</b>		(39-54) <b>E</b>	
(21-38) <b>F</b>		(21-38) <b>F</b>	
(1-20) <b>G</b>		(1-20) <b>G</b>	
Not energy efficient - higher running costs		Not environmentally friendly - higher CO <sub>2</sub> emissions	
	82		
	60		
England & Wales	EU Directive 2002/91/EC	England & Wales	EU Directive 2002/91/EC

hollis  
morgan

---